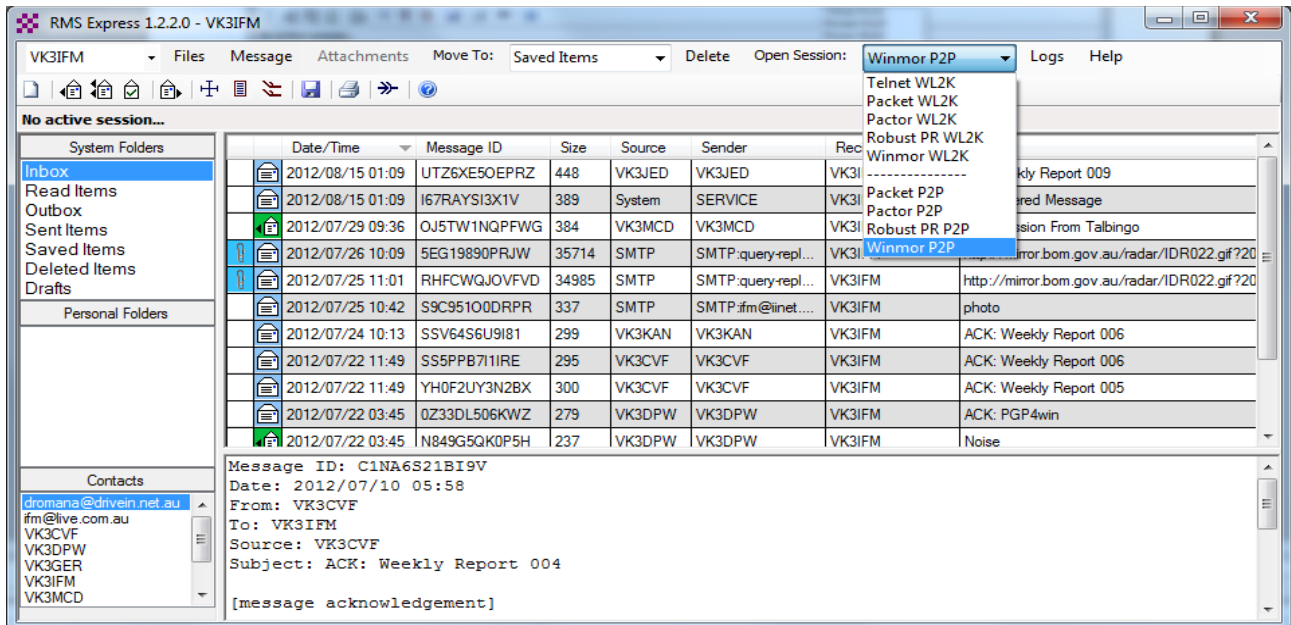


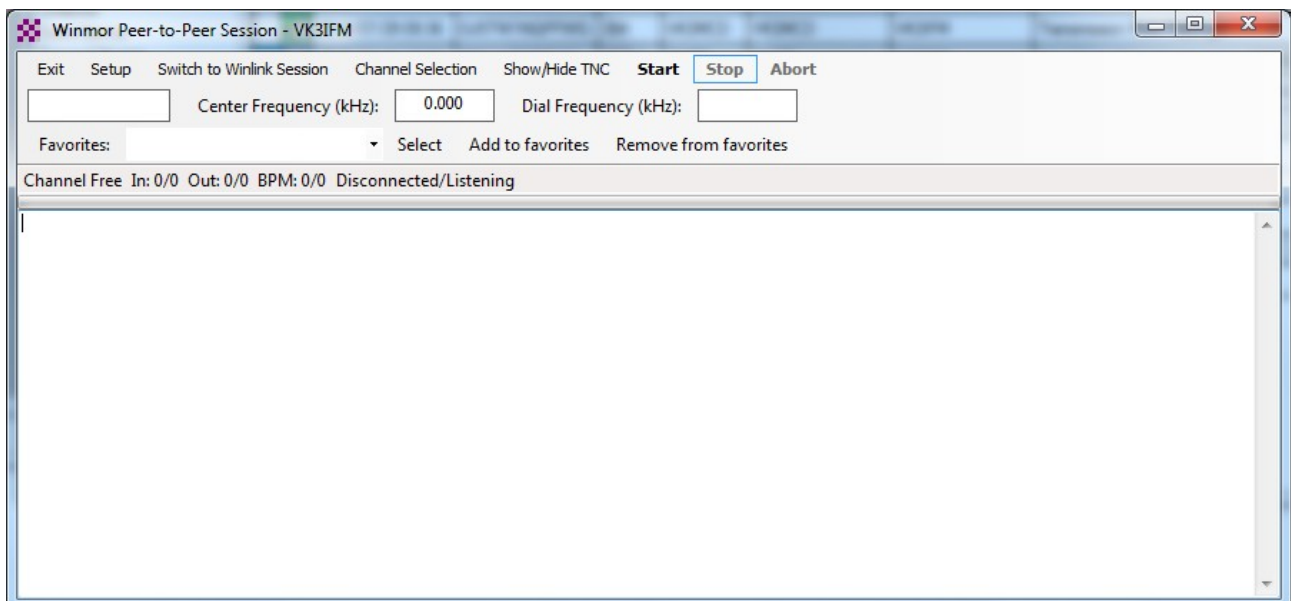
Sending Radiogram between Two Stations in WINMOR Peer-to-Peer mode.

Setup the Station on the designated frequency with the Computer running RMS Express.

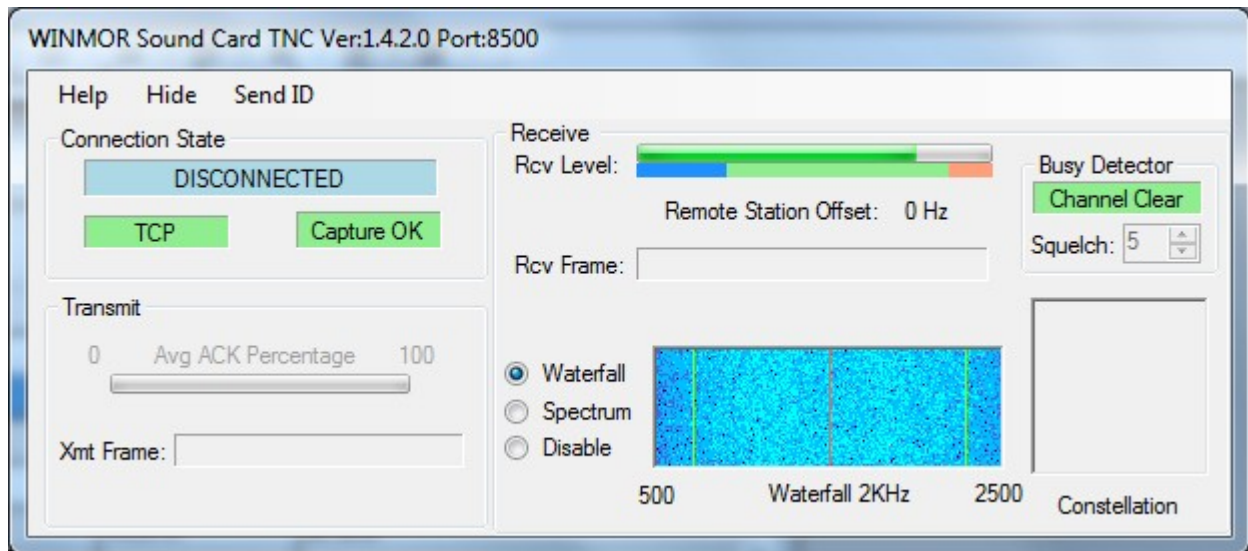
1 Open the session in WINMOR P2P



The "Comms Session" window open along with the TNC WINMOR window.



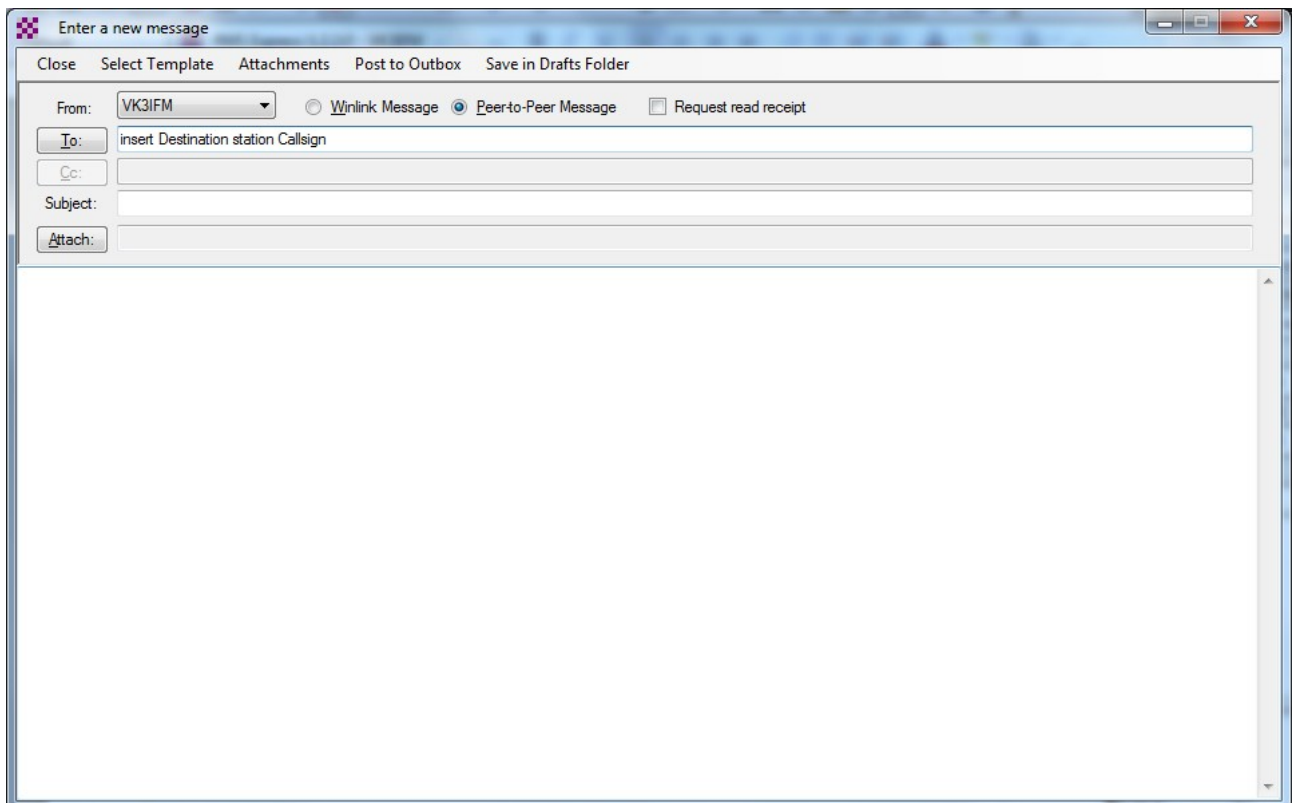
This windows **must** be open to receive an Incoming Radiogram when other station connect to your station. RMS Express is now monitoring the frequency and ready to receive incoming Radiograms.



WINMOR sound card TNC in the idle state.

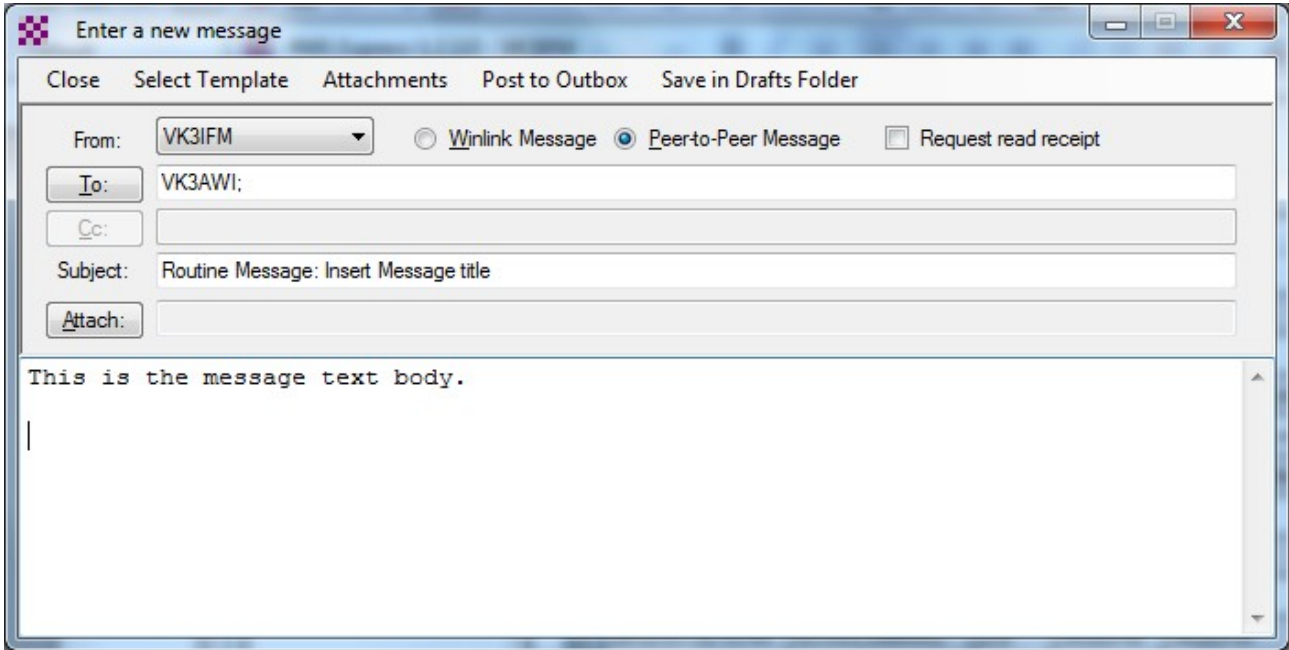
2 Sending a Radiogram.

In the Message menu, select *New Message*



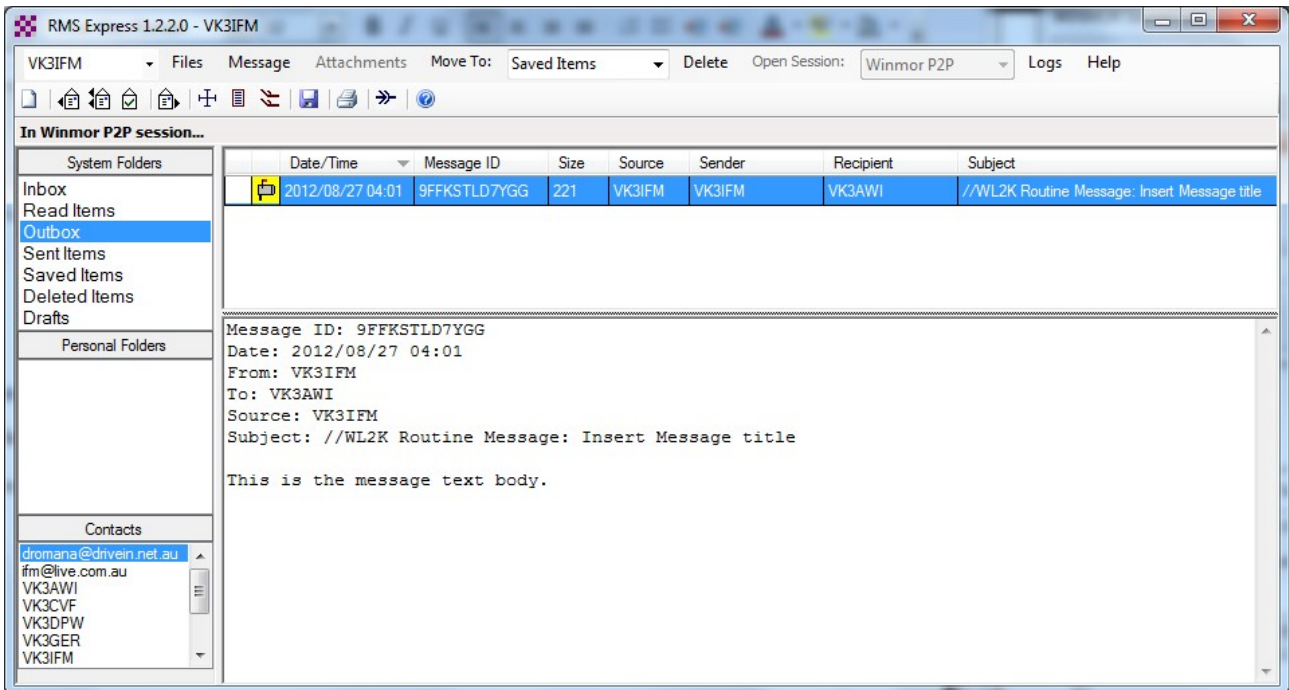
At this point Templates can be applied to the message (if they are being used) with the *Select Template* function.

Note – In Peer to Peer Message mode the radio button must be selected



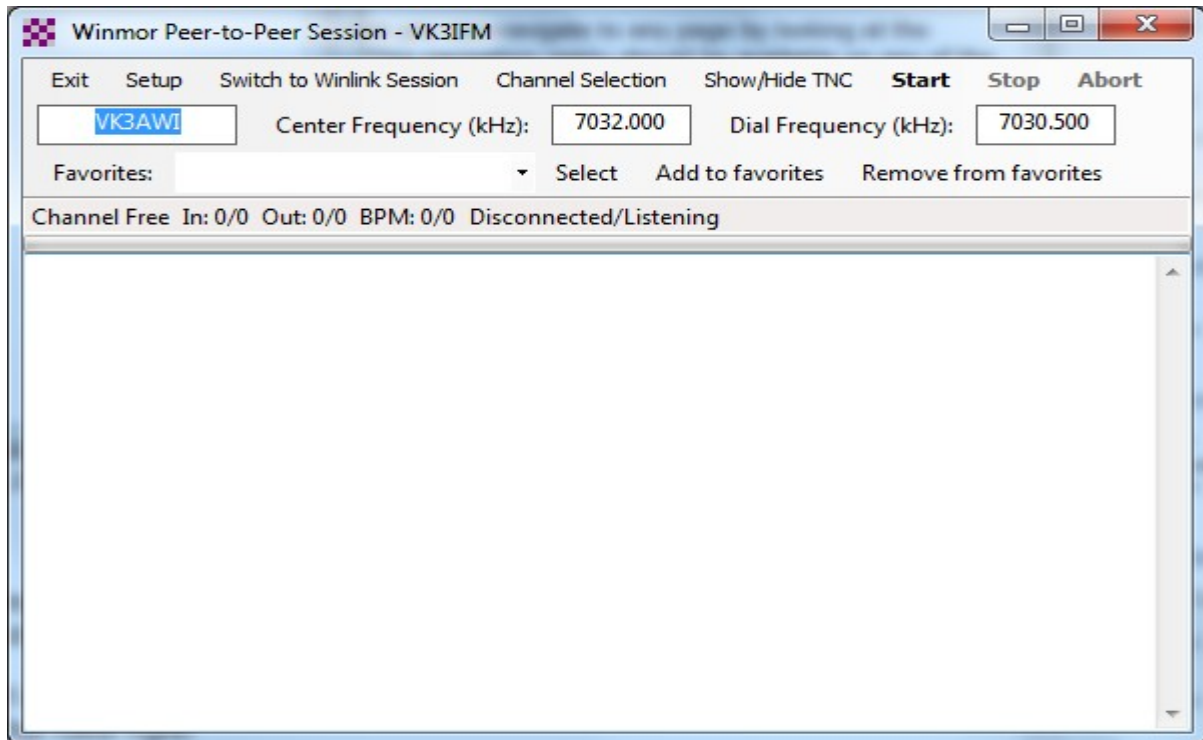
When message is complete and checked click on *Post to Outbox*.

Message is now ready to be Dispatched and be in the Outbox folder.



2 Sending the Radiogram.

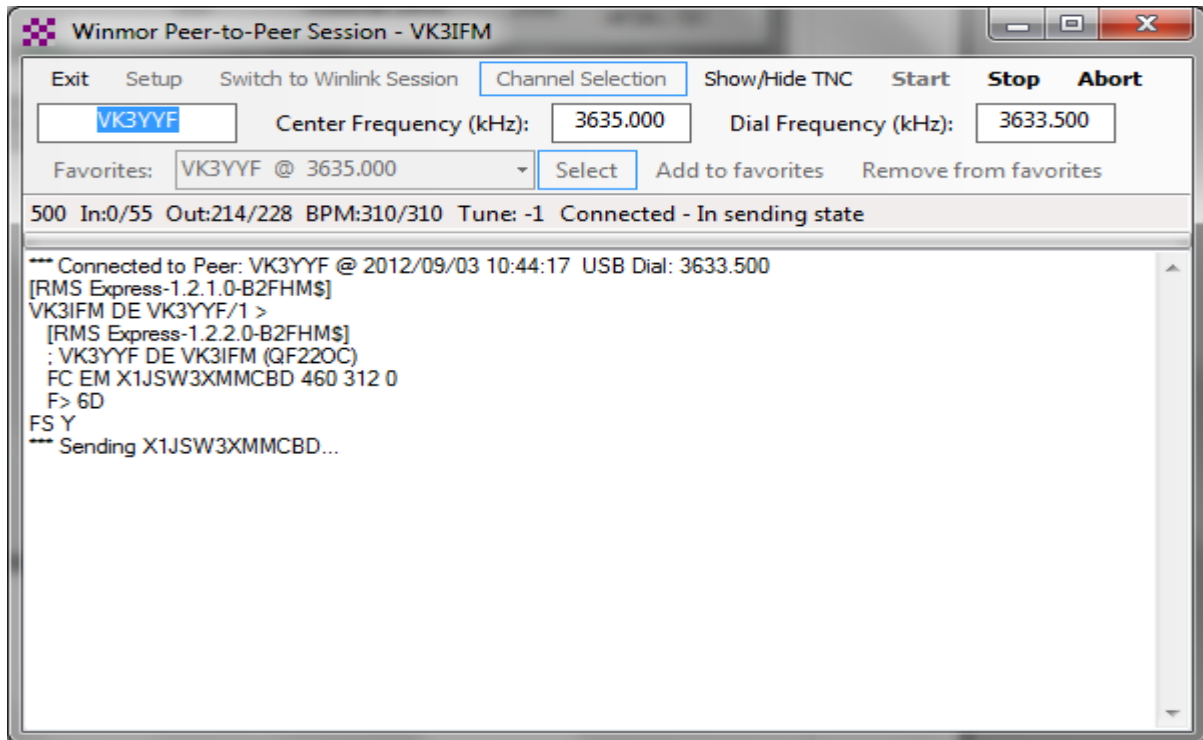
Go to the WINMOR Peer-to-Peer Session window.
Enter the Destination Station. In this example VK3AWI
Enter the the Center Frequency eg 7032.000 This give a dial Frequency of 7030.500KHz



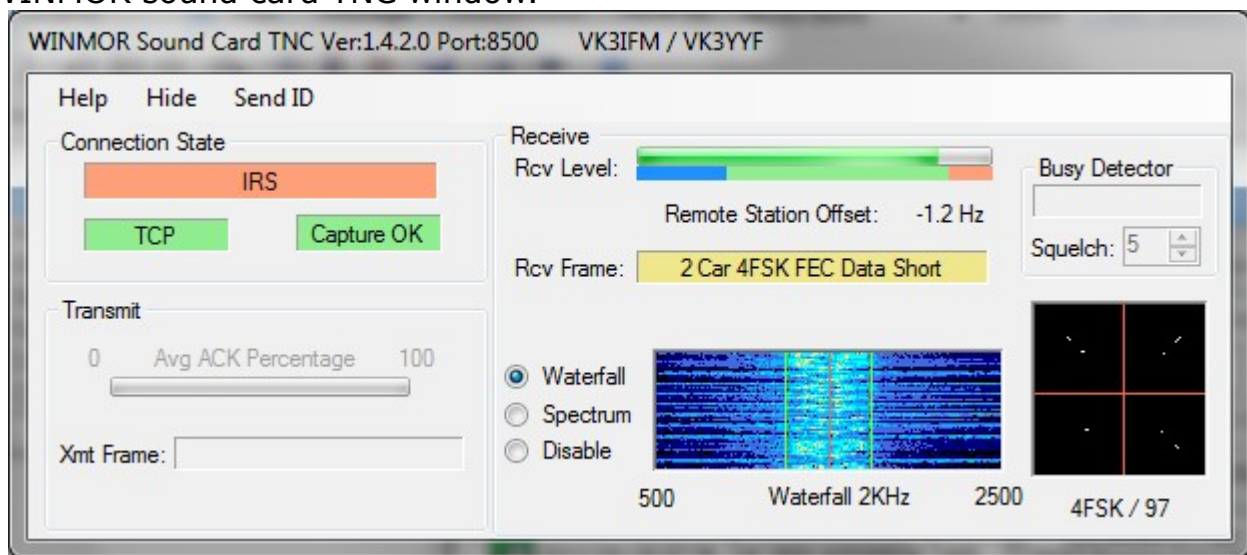
Note – You can use *Add to favorites* function save the station information for later use.

Click the **Start** to begin the Radiogram transfer.

Session Window.



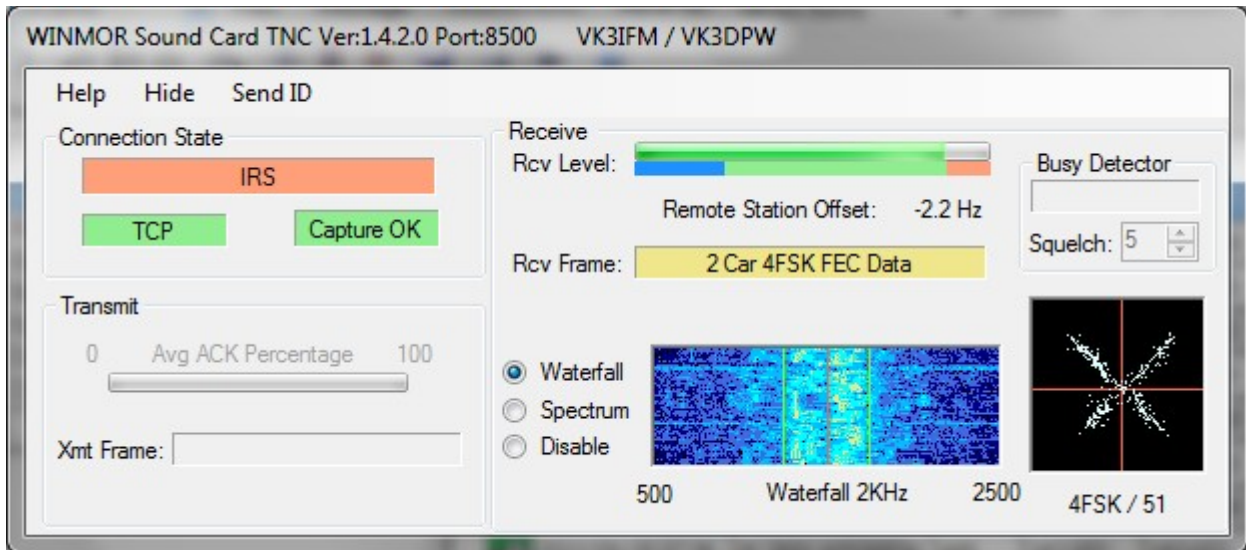
WINMOR sound card TNC window.



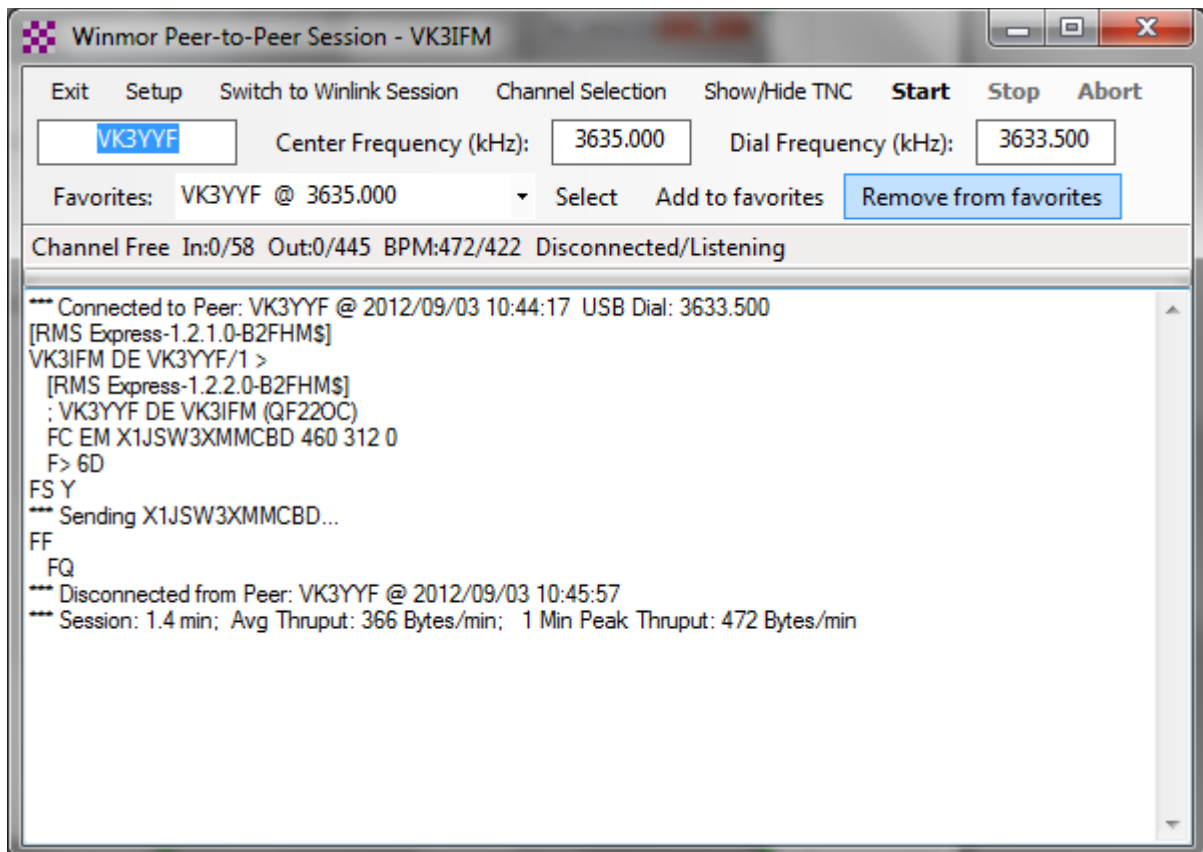
Things to note in the TNC window are :-

- the Rcv Level the Receive level adjustable on the Sound Card.
- 4FSK /97 being 4 carrier Freq Shift Keying Quality 97
- Remote Station Offset is the amount the carrier is off frequency. Can tolerate +/-200Hz.

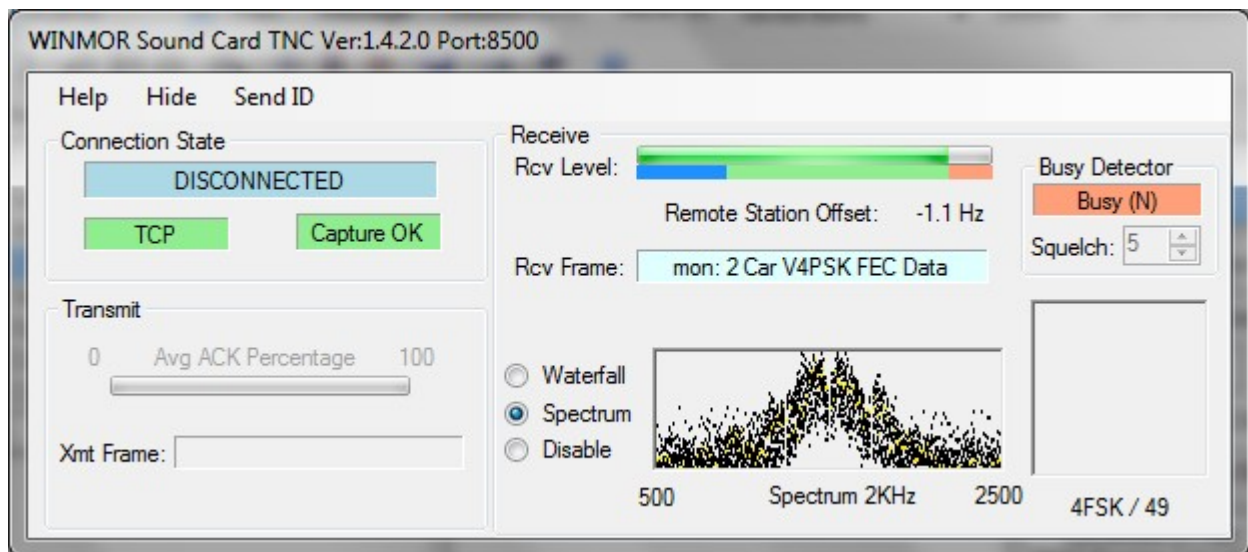
This window has a good signal.
Rcv Level is set correctly
Not the splatter on the constellation.
Signal quality is 51



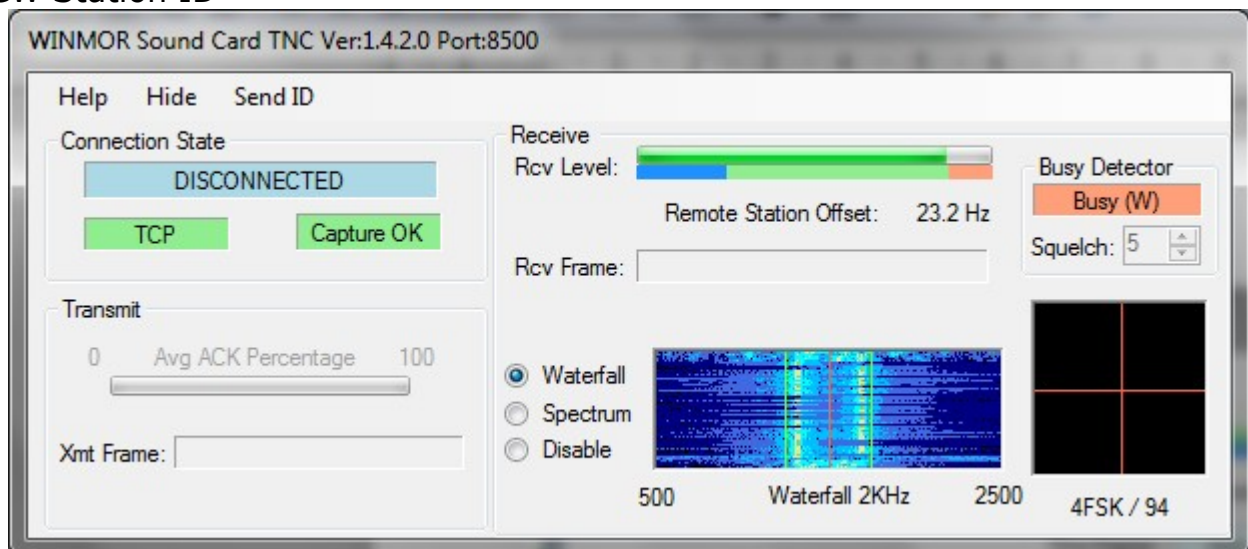
Note the termination details and information.



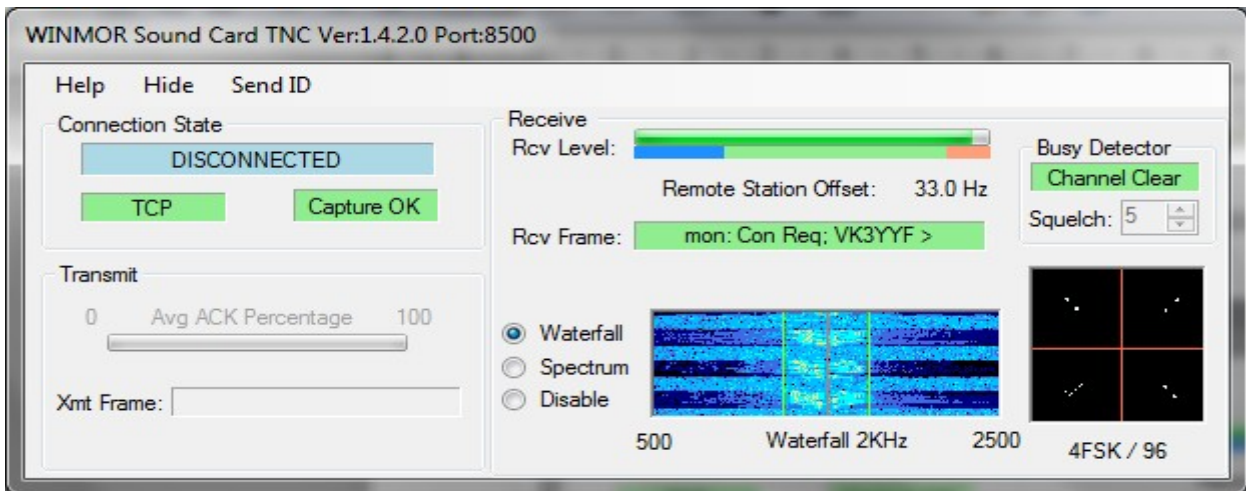
This Diagram shows the Spectrum display
Speed has changed and now using Phase Shift Keying.



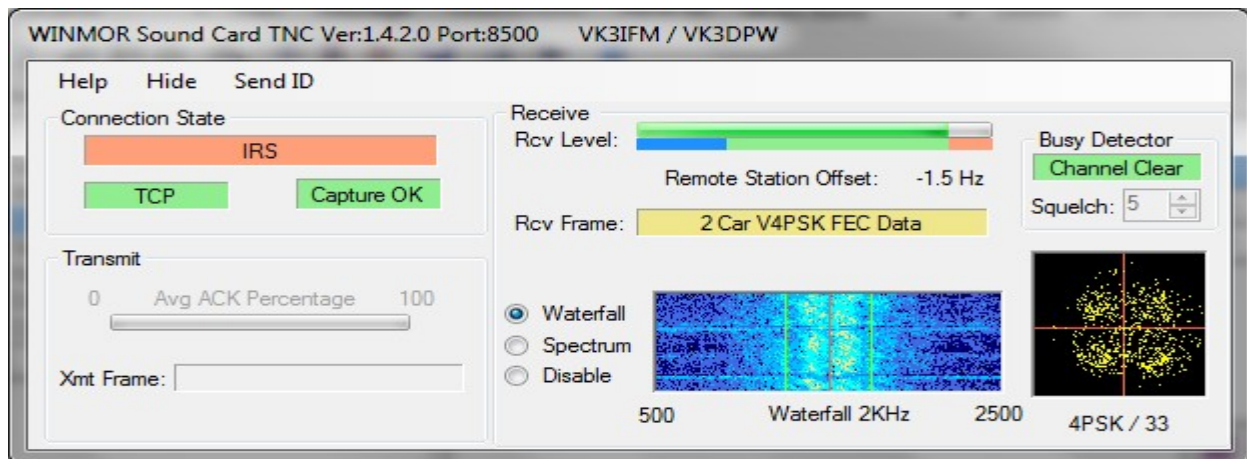
CW Station ID



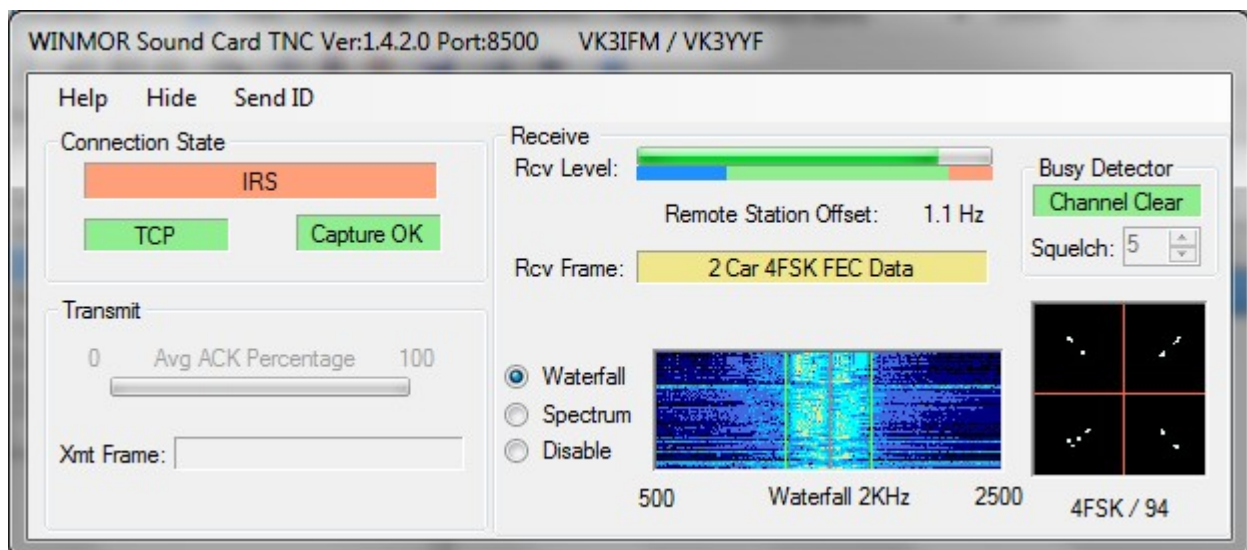
Calling or pinging a station. There is no response from the called station.



Note the pattern on the Constellation diagram. 33 signal quality



This station is close and has a good signal



Prepared by Ian Morris VK3IFM for use by WICEN Vic.